

User manual VegaObs project VegaWsClient software



Table of contents

1. Authentication	1
2. User interface	1
3. OB search.....	2
3.1 Standard queries	2
3.2 Custom queries	3
4. Export and print services	5
5. Data transfer to Aladin, JSDC and Simbad.....	5
6. OB Edition	6

Vegaobs project website

<http://vegaobs-ws.oca.eu/>

1. Authentication



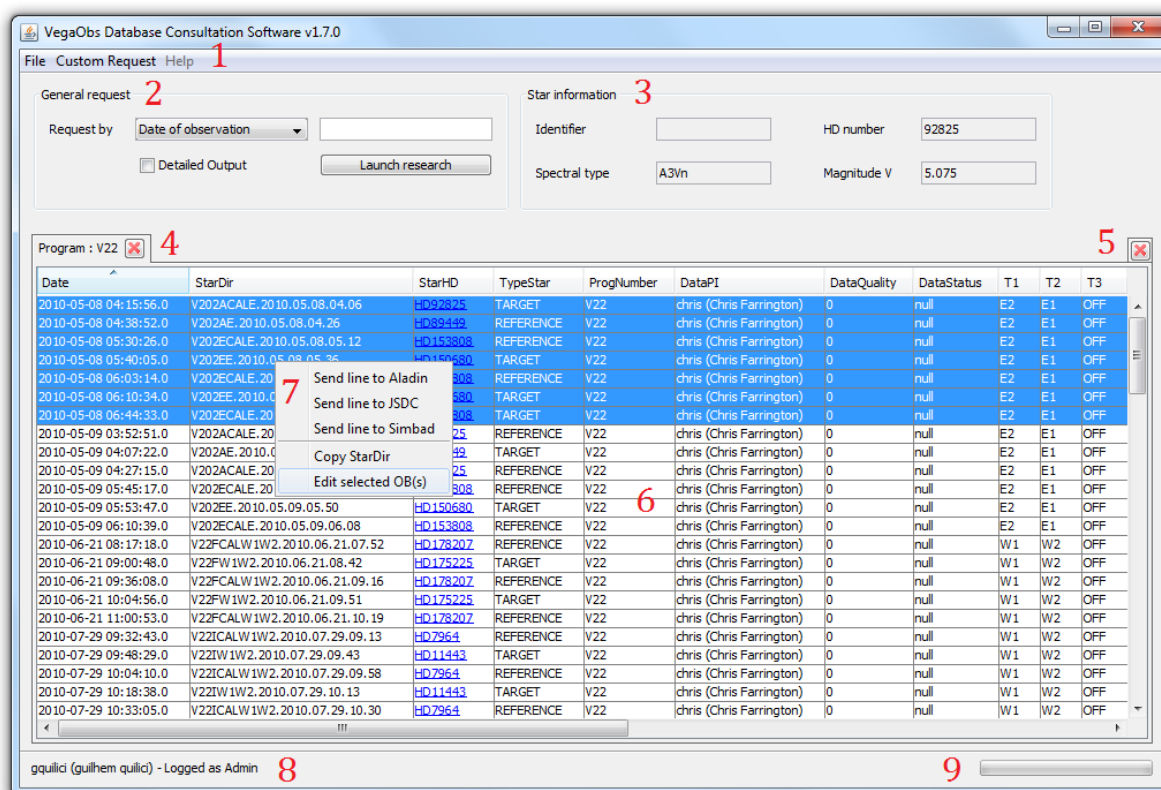
Enter your login and password in the fields of the login window (opposite picture) and click the “Log in” button.

An error message will alert you in case of trouble and will redirect you back to this window.

Your access rights after your log depend on groups you belong to:

- if you are in group “Admin”, you will have all consultation and modification rights;
- if you are in group “VEGA France”, you will have access to the data of your group and not to the data of the group “VEGA Usa” and vice versa.

2. User interface

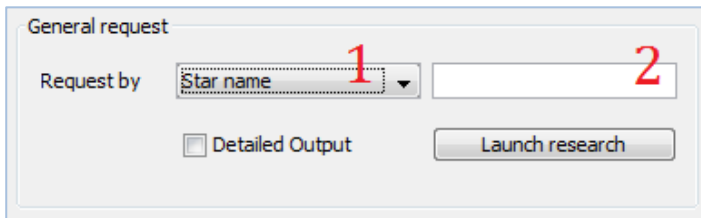


Date	StarDir	StarHD	TypeStar	ProgNumber	DataPI	DataQuality	DataStatus	T1	T2	T3
2010-05-08 04:15:56.0	V202ACALE.2010.05.08.04.06	HD92825	TARGET	V22	chris (Chris Farrington)	0	null	E2	E1	OFF
2010-05-08 04:38:52.0	V202AE.2010.05.08.04.26	HD89449	REFERENCE	V22	chris (Chris Farrington)	0	null	E2	E1	OFF
2010-05-08 05:30:26.0	V202CALE.2010.05.08.05.12	HD153808	REFERENCE	V22	chris (Chris Farrington)	0	null	E2	E1	OFF
2010-05-08 05:40:05.0	V202EE.2010.05.08.05.26	HD150580	TARGET	V22	chris (Chris Farrington)	0	null	E2	E1	OFF
2010-05-08 06:03:14.0	V202CALE.2010.05.08.06.03	HD150580	REFERENCE	V22	chris (Chris Farrington)	0	null	E2	E1	OFF
2010-05-08 06:10:34.0	V202EE.2010.05.08.06.10	HD150580	TARGET	V22	chris (Chris Farrington)	0	null	E2	E1	OFF
2010-05-08 06:44:33.0	V202CALE.2010.05.08.06.44	HD150580	TARGET	V22	chris (Chris Farrington)	0	null	E2	E1	OFF
2010-05-09 03:52:51.0	V202ACALE.2010.05.09.03.52	HD150580	REFERENCE	V22	chris (Chris Farrington)	0	null	E2	E1	OFF
2010-05-09 04:07:22.0	V202AE.2010.05.09.04.07	HD150580	TARGET	V22	chris (Chris Farrington)	0	null	E2	E1	OFF
2010-05-09 04:27:15.0	V202ACALE.2010.05.09.04.27	HD150580	REFERENCE	V22	chris (Chris Farrington)	0	null	E2	E1	OFF
2010-05-09 05:45:17.0	V202CALE.2010.05.09.05.45	HD150580	REFERENCE	V22	chris (Chris Farrington)	0	null	E2	E1	OFF
2010-05-09 05:53:47.0	V202EE.2010.05.09.05.53	HD150680	TARGET	V22	chris (Chris Farrington)	0	null	E2	E1	OFF
2010-05-09 06:10:39.0	V202CALE.2010.05.09.06.10	HD153808	REFERENCE	V22	chris (Chris Farrington)	0	null	E2	E1	OFF
2010-06-21 08:17:18.0	V22FCALW1W2.2010.06.21.07.52	HD178207	REFERENCE	V22	chris (Chris Farrington)	0	null	W1	W2	OFF
2010-06-21 09:00:48.0	V22FW1W2.2010.06.21.08.42	HD175225	TARGET	V22	chris (Chris Farrington)	0	null	W1	W2	OFF
2010-06-21 09:36:08.0	V22FCALW1W2.2010.06.21.09.16	HD178207	REFERENCE	V22	chris (Chris Farrington)	0	null	W1	W2	OFF
2010-06-21 10:04:56.0	V22FW1W2.2010.06.21.09.51	HD175225	TARGET	V22	chris (Chris Farrington)	0	null	W1	W2	OFF
2010-06-21 11:00:53.0	V22FCALW1W2.2010.06.21.10.19	HD178207	REFERENCE	V22	chris (Chris Farrington)	0	null	W1	W2	OFF
2010-07-29 09:32:43.0	V22ICALW1W2.2010.07.29.09.13	HD7964	REFERENCE	V22	chris (Chris Farrington)	0	null	W1	W2	OFF
2010-07-29 09:48:29.0	V22IW1W2.2010.07.29.09.43	HD11443	TARGET	V22	chris (Chris Farrington)	0	null	W1	W2	OFF
2010-07-29 10:04:10.0	V22ICALW1W2.2010.07.29.09.58	HD7964	REFERENCE	V22	chris (Chris Farrington)	0	null	W1	W2	OFF
2010-07-29 10:18:38.0	V22IW1W2.2010.07.29.10.13	HD11443	TARGET	V22	chris (Chris Farrington)	0	null	W1	W2	OFF
2010-07-29 10:33:05.0	V22ICALW1W2.2010.07.29.10.30	HD7964	REFERENCE	V22	chris (Chris Farrington)	0	null	W1	W2	OFF

- 1) Menu bar
- 2) Standard requests panel
- 3) Star information display panel
- 4) Tab system panel
- 5) Icon for close all tabs
- 6) Scrollable results table
- 7) Results tables' contextual menu
- 8) User information display panel
- 9) Progress bar

3. OB search

3.1 Standard queries



Use the standard requests panel (opposite picture).

1: Select your search criteria in the list (marker 1). The possible criteria are “Star name”, “Star HD”, “Date of observation”, “Program number”, “Data PI”, “Data Status” and “OB name”.

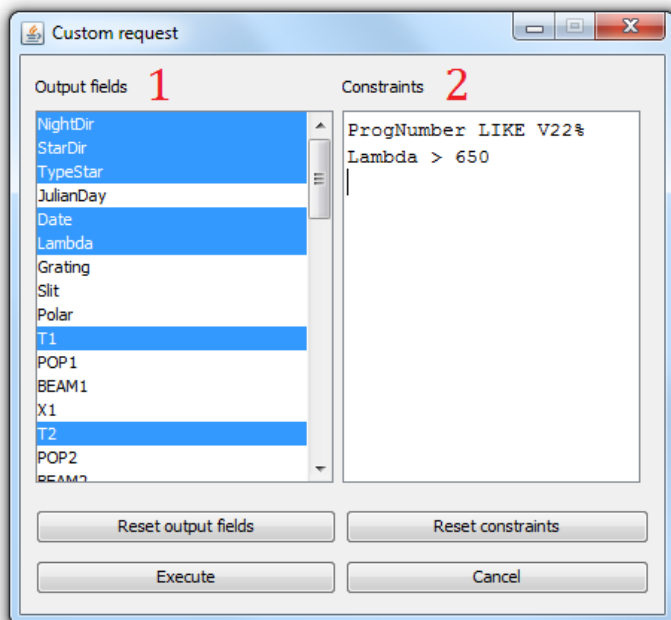
2: Enter the desired value in the field beside (marker 2). It's possible to enter approximate values for dates and program numbers. For example: “2012” or “2012.04” for the date and “V4” or “V43” for the program number.

3: Check the “Detailed Output” checkbox if you want to see all the OB fields in the results table. The default fields are:

- | | | |
|--------------|---------------|-------------|
| - Date | - DataPI | - Lambda |
| - StarDir | - DataQuality | - ConfigCam |
| - StarHD | - DataStatus | - Polar |
| - TypeStar | - PubliID | - BLUE CAM |
| - ProgNumber | - T1 – T4 | - RED CAM |
| - IR-Data | - Grating | |

4: Click on the “Launch research” button. A new tab containing the results table returned by the database automatically opens in the tabbed panel (markers 4 and 6 of the user interface).

3.2 Custom queries



Use the custom queries composition form (opposite picture), accessible through the Custom Request menu (marker 1 of the user interface) and the keyboard shortcut <Ctrl+R>.

COMMENT: The right field (marker 2) here contains two examples of possible constraints.

1: Select from the list on the left (marker 1) the fields you want to appear in the results. To perform a multiple selection, hold down the “Ctrl” key. Use <Ctrl+A> to select them all.

2: Enter into the right field (marker 2) the constraints you want to apply when searching in the database. A constraint occupies a single line and is divided into three elements: a field, an operator and a value. These three elements are separated by spaces, the value occupying all the rest of the line.

The fields you can use in constraints are those listed in the left list, whether they are selected or not (it’s possible to impose a restriction on a field that will not appear in the results).

You can use the following operators:

- = (equal) <> (different) Usable for numbers and text
- < > <= >= Usable for numbers only
- LIKE NOT_LIKE Usable for text only
- IS IS_NOT Usable only for the special NULL value

Operators “LIKE” and “NOT_LIKE” allow you to perform wildcard searches on texts using the symbols “%” and “_”:

- “%” replaces any text of any length (including 0);
- “_” replaces any single character.

For example, if you’re searching for all program numbers beginning with ‘V4’, you can write the following constraint:

```
ProgNumber LIKE V4%
```

You’ll get as result all the entries with these program numbers: ‘V4’, ‘V42’, ‘V43-2’...

Now if you only want the program numbers beginning with ‘V4’ and whose length is 3, you can write:

```
ProgNumber LIKE V4_
```

You’ll get as result all the entries with these program numbers: ‘V40’, ‘V41’... ‘V49’.

Operators “IS” and “IS_NOT” are used only for the special NULL value. For example, you can write:

```
DataStatus IS NULL
```

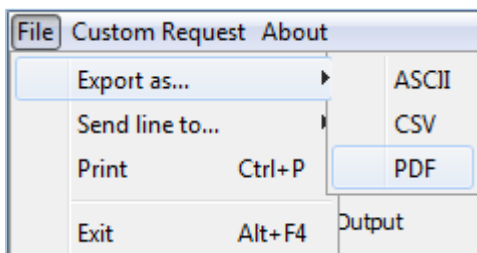
NOTE: Researches on the database are not case-sensitive, which means that you can use capital letters like lower letters in fields’ name and values of your constraints (except for the NULL keyword).

3: Click on the “Execute” button to start searching. A new tab containing the results table returned by the database automatically opens in the tabbed panel (markers 4 and 6 of the user interface).

NOTE: For each search, regardless of the type of query used, two columns are added at the end of the table with the links to the observation reports of the blue and red detectors of VEGA. Similarly, the field “PubliID” contains a link to the corresponding publication.

When you click one of these links, the corresponding content is displayed in a new tab of the user preferred web browser. An empty cell indicates that the link doesn’t exist, due to a nonexistent file or an incorrect link.

4. Export and print services



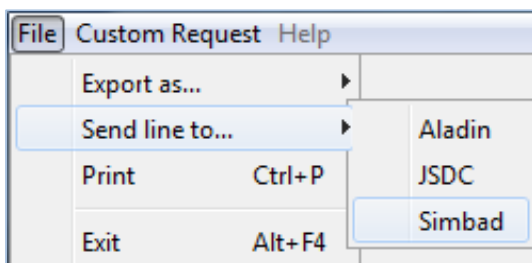
Use the File > Export as... menu of the menu bar (opposite picture) or the contextual menu (marker 7 of the user interface) to access to export and print services.

The use of the “ASCII” and “CSV” items causes the opening of a dialog where you can choose the destination file. The use of the “PDF” item causes the generation of the file in the user temporary directory and its opening with the default system PDF viewer.

An error message immediately appears and stops the execution of the function in case there is no tab opened in the application.

NOTE: The exported table is the one contained in the active tab, i.e. the tab displayed in the foreground during the execution of the function.

5. Data transfer to Aladin, JSDC and Simbad



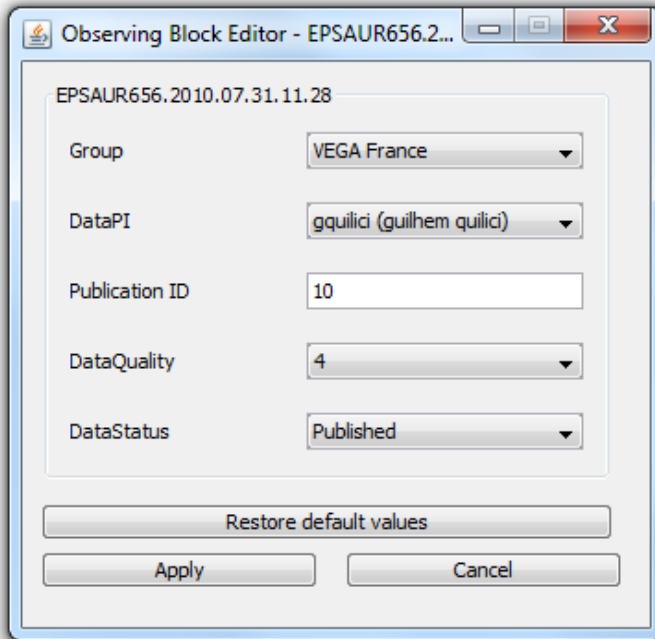
Use the File > Send line to... menu of the menu bar (opposite picture), the results tables’ contextual menu (marker 7 of the user interface) or the hypertext link on the “StarHD” field in results tables (link to JSDC).

The data transfer to Aladin is possible only if the Aladin application is already started and connected to a SAMP hub on the local machine. This last one can be the internal hub of Aladin, or any other one. If one of these two conditions isn’t filled, an error message will inform you about it.

The data transfer to JSDC and Simbad opens the result page corresponding to the selected star in a new tab of the user preferred web browser.

In every case, an error message appears and stops the execution of the function in case there is no OB selected in the active results table, or if there is no tab opened in the application.

6. OB Edition



Use the OB edition form (opposite picture), accessible through the results tables' contextual menu (marker 7 of the user interface).

Data access permissions:

- classic users of the groups "VEGA France" and "VEGA Usa" have no modification right on OBs;
- an astronomer who is data PI can only modify the "PubliID", "DataQuality" and "DataStatus" fields of the OBs of whom he is data PI;
- the members of the "Admin" group have edition permission on every OB of the database, without any limitation.

Click on the "Apply" button to record the modifications in the database and update the results tables already opened in the application. A message dialog will appear to inform you about the success or the failure of the database update.

Click on the "Cancel" button to leave the editor without making an update. The use of the red cross to close the window will open a confirmation dialog if data were modified. Select "No" to leave the editor without making an update.

The "Restore default" button allows you to restore the values loaded in the OB editor during its starting up, if you think you made an error. The values which appear after the click on this button are, at any time, the same that those of the database.

IMPORTANT:

- Since the 1.6 version, it's possible to edit multiple OBs at the same time using the same form. Just make a multiple selection before opening the contextual menu. The form will indicate it by displaying the word "MULTIPLE" rather than the OB name.
However, the five fields of the form will be modified in an identical way for every selected OB. You can't choose to update only one of the five fields to preserve potentially different values for the others.
- If you edit multiple OBs at the same time, the default values loaded don't correspond to the real OB data. The form will thus always ask you for a confirmation before leaving without making an update.